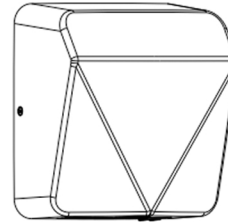


Visit ABIS Electronics Help Center:
<https://www.abiselectronics.co.uk/apps/help-center>



To register for warranty, please visit:
<https://www.abiselectronics.co.uk/pages/warranty-registration-form>



DuoAct Automatic Electric Hand Dryer User Manual

ABIS Electronics,
85 Great Portland Street, London,
W1W 7LT, UK
<https://www.abiselectronics.co.uk>



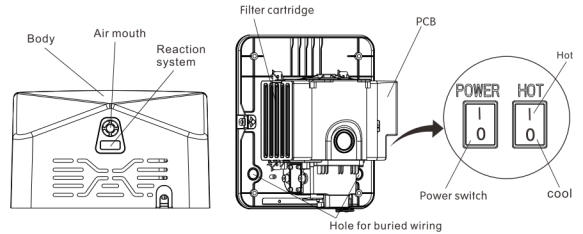
Features:

1. The device is equipped with an automatic infrared ray induction system, which reduces waste and allows to avoid pathogen cross infection and germs with no-touch hand drying.
2. The hand dryer has outstanding performance due to a chip control technology and infrared sensor.
3. A high-speed motor with an RPM of 23000 dries hands within 7-12 seconds.
4. Easy Installation. Installation only requires an expansion pipe and a screw hook.
5. Suitable for all departments in hospitals, schools, food or pharmaceutical manufacturers, airports, office buildings, hotels, government agencies, research institutions and other places.

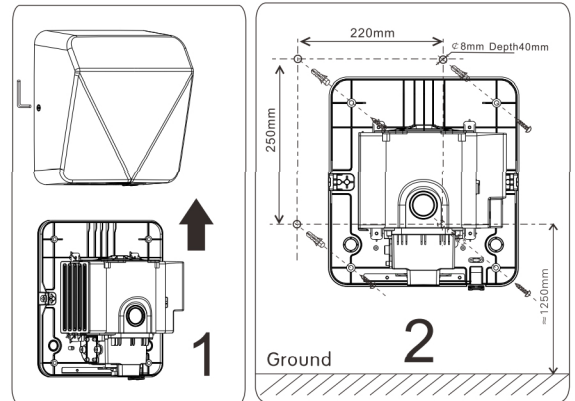
Technical Parameters:

Rated Voltage	AC 220-240V	Waterproof Grade	IPX1
	AC 110V		
Rated Frequency	50/60Hz	Wind Speed	90 m/s
Rated Power	1800W	Sensing Distance	12± 3cm
Ambient Temperature	0-40°C	Drying Time	7-13S
Installation	Wall Mounting	Overall Size	325 x 295 x 180 mm

Components Name:



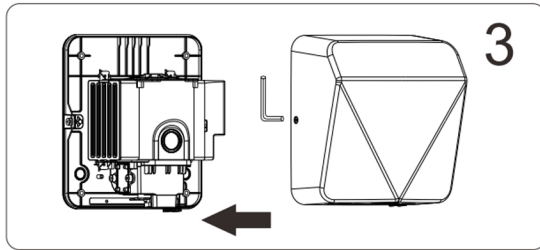
Installation Method



Cleaning of Filter Cartridge:



Attention: If the airflow reduces, clean the filter screen.
Avoid getting water on the filter.

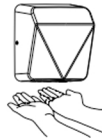


Usage:

1 Approach the hand dryer and put your hands underneath the device where the air is blowing.



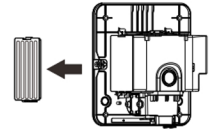
2 Turn your palms upwards and slowly move them back and forth.



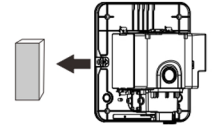
3 Finally, rub the hands when dry.



1 Hold the bulge, which is in the middle of the filter screen, then pull and get it out.

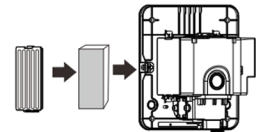


2 Take out the filter screen from the filter cartridge.



3 Clean the dust from the filter screen. Do NOT wash. If there is too much dust, the filter needs to be replaced.

4 Put the filter screen in the correct position towards the filter cartridge. Then insert the filter cartridge into the body.



Maintenance:

1. Ensure the device is unplugged before cleaning. Clean the shell with a natural detergent when dirty.
2. Do NOT use alkalinescent, lacquer thinner, abrasive detergents, or detergents containing acid.
3. Do NOT use friction tools, such as nylon brushes, to avoid shell scratching.
4. When cleaning the shell, avoid the water drops inside the hand dryer to prevent electric shock or short circuit.
5. To extend the service life, it is recommended to unplug the device when it is not in use.
6. In case of the device break down, immediately unplug it from the power and contact the professional electrician for repair.
7. If the hand dryer is not in use for a long time, unplug it from the power supply, and store it in a box inside a dry and clean space after cleaning.

Terms of guarantee:

1. The product warranty period is one year from the purchase date.
2. During the warranty period, in case of a warranty case, the device can be replaced for free. Original invoice and the quality insurance card stamped by the dealer will need to be presented by the customer.
3. The following are NOT in the scope of free maintenance:
 - a) Improper use and fault caused by demolition, unassembling, and repair by a technical specialist without ABIS authorization;
 - b) Faults caused by fires, earthquakes, thunder and other natural disasters;
 - c) Abnormal voltage;
 - d) Faults caused by non-matching power;
 - e) Faults caused by long-time operation in improper working conditions.
4. After the 1-year warranty period, the maintenance of the product is no longer free, while our company remains committed to service.

Note before installation:



Warning

1. Do NOT use the hand dryer near water, in places such as bathtubs, showers, basins or other containers with water.
2. Children should be supervised to ensure they do not play with the device. The hand dryer is intended to be used indoor only.
3. Professional installation is highly recommended to install power lines to avoid electric shock hazard.
4. Ensure the device is unplugged before installation.
5. Ensure you install an earth leakage circuit breaker to prevent shock and fire hazards.
6. Do not unassemble, repair or alter the hand dryer on your own to avoid the risk of an electric shock, fire and other accidents.



Attention

1. Before installation, ensure there are no other objects around 400mm. Do not install the hand dryer on the stainless steel or artificial marble surface to avoid misoperation.
2. The hand dryer unit should be firmly fixed to the even surface (wall).
3. Do not install the hand dryer near corrosive or flammable gases or objects. It may cause fire or product damage and malfunction.
4. Do not install the hand dryer in the environment with high temperature or dust, as it may cause product damage.

Step-by-Step Installation Guide:

Scan the QR code to read our Ultimate Guide on How to Install an Electric Hand Dryer - Complete Installation Guide on ABIS Electronics

